

KEY NOTES #

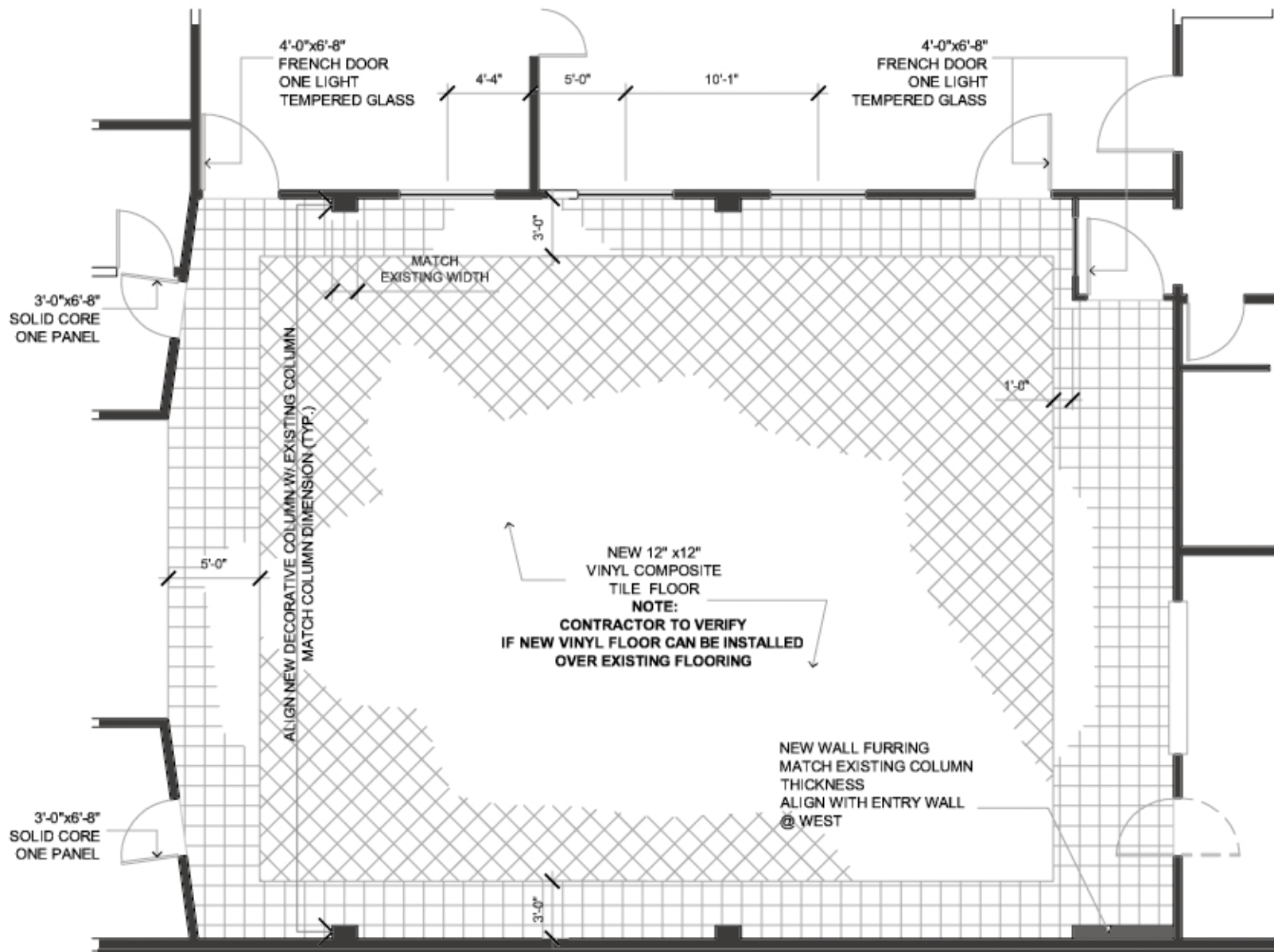
1. NEW FINISHED 42" MILLWORK WAINSCOT.
2. NEW FLOOR BASE MOLDING
3. NEW CHAIR RAIL ON TOP OF WAINSCOT.
4. NEW 3'-0" x 3'-0" TEMPERED GLASS WINDOW W/ MOLDING.
5. NEW 3'-0" x 5'-0" TEMPERED GLASS WINDOW W/ MOLDING.
6. NEW CRIPPLE WALL AT ENTRY TO CEILING - FINISH W/ 5/8" TYPE 'X' GYP. BD.
7. NEW DOOR - SEE PLAN.
8. NEW SOFFIT AT EXISTING COLUMNS @ EAST WALL - FINISH W/ 5/8" TYPE 'X' GYP. BD.
9. NEW SOFFIT - FINISH W/ 5/8" TYPE 'X' GYP. BD.
10. NEW DECORATIVE COLUMNS @ WEST WALL - FINISH W/ 5/8" TYPE 'X' GYP. BD. (MATCH EXISTING COLUMN DIMENSIONS).
11. EXISTING PASS-THROUGH OPENING TO KITCHEN - ADJUST SILL TO 42" ABOVE FINISHED FLOOR.

Interior Elevations

scale: 1/8" = 1'-0"

September 22, 2011

Ottolia & Barnes Architecture
 tel. (310) 375-0107
 dco@OBastudio.com

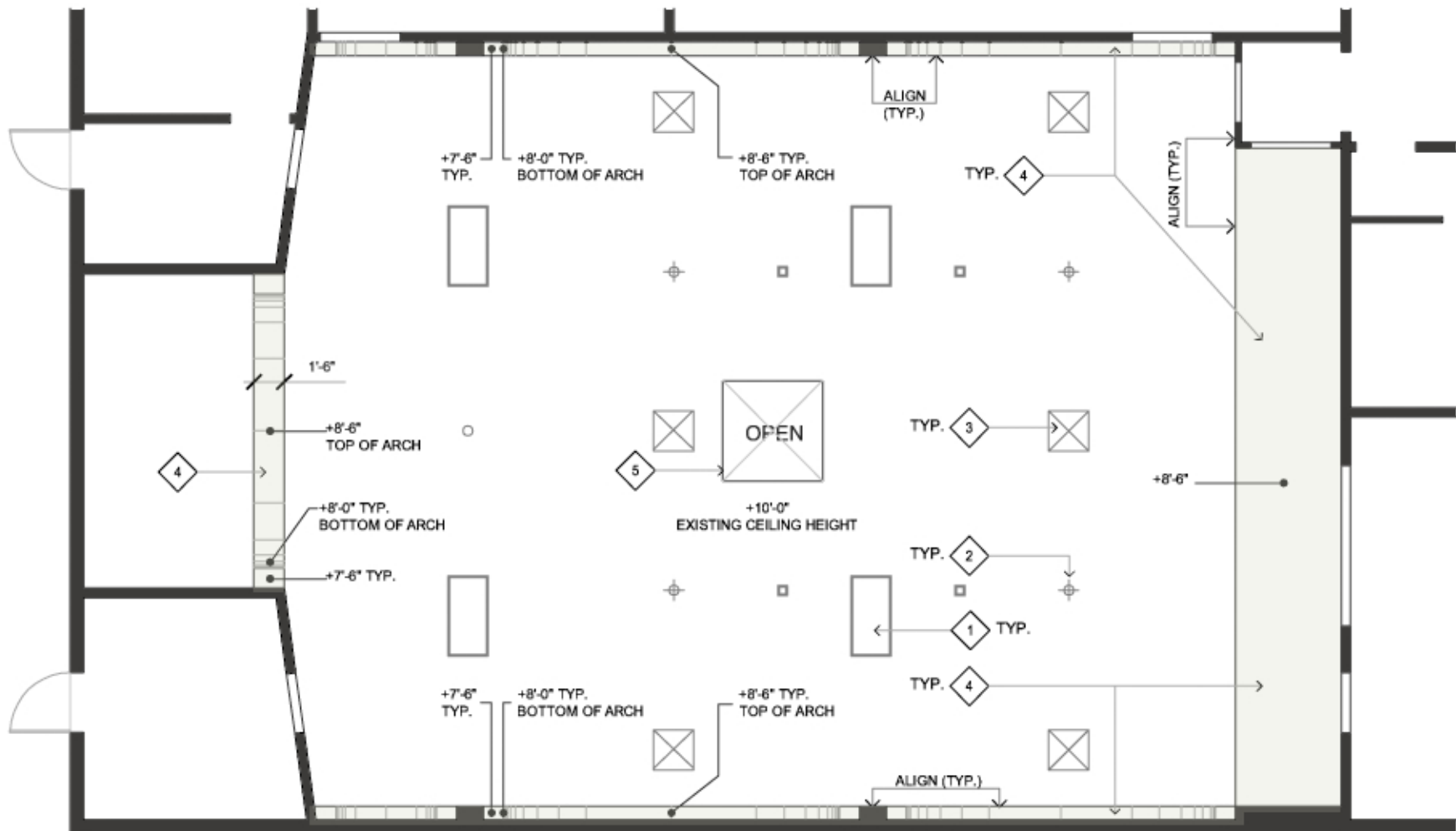


Floor Finish

scale: $\frac{1}{8}" = 1'-0"$

September 22, 2011

Ottolia & Barnes Architecture
tel. (310) 375-0107
dco@OBastudio.com



KEY NOTES

1. REMOVE & REPLACE EXISTING 2'X4' FLUORESCENT LIGHT FIXTURES.
2. REMOVE & REPLACE EXISTING SURFACED MOUNTED LIGHT FIXTURES
3. EXISTING CEILING VENTS TO REMAIN
4. NEW CEILING SOFFIT - 5/8" TYPE 'X' GYP BD.
5. EXISTING SKYLIGHT TO REMAIN

CEILING PLAN NOTES

- CONTRACTOR SHALL SUPPLY OWNER WITH TWO (2) BIDS FOR FINISHING THE EXISTING CEILING.
- BID #1 - PAINT EXISTING CEILING
 - BID#2 - COVER EXISTING CEILING W/ TYPE 'X' GYP BD.

Reflected Ceiling Plan

scale: 1/8" = 1'-0"

September 22, 2011

Ottolia & Barnes Architecture
 tel. (310) 375-0107
 dco@OBastudio.com